

# Lovibond® Water Testing

Tintometer® Group



## Photometer-System MD 110



**Cl • Br • pH • CyA • TA • CaH**

**DE** Bedienungsanleitung

Seite 4–29

**GB** Instruction Manual

Page 30–55

**FR** Mode d'emploi

Page 56–81

**IT** Istruzioni d'uso

Pagina 82–107

**ES** Instrucciones

Página 108–133

**PT** Instruções de Serviço

Página 134–159

[www.lovibond.com](http://www.lovibond.com)

## **GB** Important Information



The accuracy of the instrument is only valid if the instrument is used in an environment with controlled electromagnetic disturbances according to DIN 61326.  
Wireless devices, e.g. wireless phones, must not be used near the instrument.

### **Important disposal instructions for batteries and accumulators**

EC Guideline 2006/66/EC requires users to return all used and worn-out batteries and accumulators. They must not be disposed of in normal domestic waste. Because our products include batteries and accumulators in the delivery package our advice is as follows :

Used batteries and accumulators are not items of domestic waste. They must be disposed of in a proper manner. Your local authority may have a disposal facility; alternatively you can hand them in at any shop selling batteries and accumulators. You can also return them to the company which supplied them to you; the company is obliged to accept them.



### **Important Information**

#### **To Preserve, Protect and Improve the Quality of the Environment Disposal of Electrical Equipment in the European Union**

Because of the European Directive 2012/19/EU your electrical instrument must not be disposed of with normal household waste!

Tintometer GmbH will dispose of your electrical instrument in a professional and environmentally responsible manner. This service, **excluding the cost of transportation** is free of charge. This service only applies to electrical instruments purchased after 13th August 2005. Send your electrical Tintometer instruments for disposal freight prepaid to your supplier.



• <b>General notes</b> . . . . .	32
Guidelines for photometric measurements . . . . .	32
Method notes . . . . .	32
Replacement of batteries . . . . .	33
• <b>Functional description</b> . . . . .	34
Operation . . . . .	34
OTZ (One Time Zero) . . . . .	34
Display backlight . . . . .	35
Recall of stored data . . . . .	35
Countdown . . . . .	35
• <b>Methods</b> . . . . .	36
Chlorine with tablet . . . . .	36
Chlorine with liquid reagent . . . . .	38
Chlorine HR with DPD tablet . . . . .	40
Bromine with tablet . . . . .	42
pH-value with tablet . . . . .	44
pH-value with liquid reagent . . . . .	45
CyA-TEST (Cyanuric acid) with tablet . . . . .	46
Alkalinity-m with tablet . . . . .	47
Hardness Calcium with tablet . . . . .	48
• <b>Menu options</b> . . . . .	50
Menu selections . . . . .	50
Recall of stored data . . . . .	50
Transmitting stored data - Bluetooth® . . . . .	50
Setting date and time . . . . .	51
• <b>Calibration Mode</b> . . . . .	52
User calibration . . . . .	52
Factory calibration reset . . . . .	53
• <b>Technical data</b> . . . . .	54
Operating messages . . . . .	55
Error codes . . . . .	55
Copyright and Trademark Notice . . . . .	55

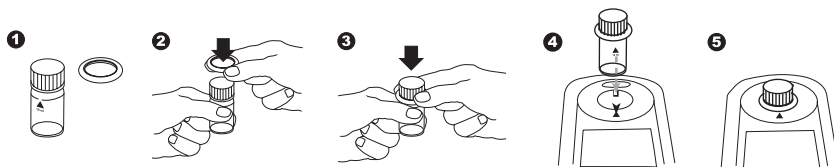
## Guidelines for photometric measurements

1. Vials, caps and stirring rods should be cleaned thoroughly **after each analysis** to prevent interference. Even minor reagent residues can cause errors in the test result.
2. The outside of the vial must be clean and dry before starting the analysis. Clean the outside of the vials with a towel to remove fingerprints or other marks.
3. Zero calibration and test must be carried out with the same vial as there may be slight differences in optical performance between vials.
4. The vials must be positioned in the sample chamber for zeroing and test with the  $\Delta$  mark on the vial aligned with the  $\nabla$  mark on the instrument.
5. Always perform zeroing and test with the vial cap tightly closed. Only use the cap with a sealing ring.
6. Bubbles on the inside wall of the vial lead to incorrect measurements. To prevent this, remove the bubbles by swirling the vial before performing the test.
7. Avoid spillage of water into the sample chamber because this can lead to incorrect test results.
8. Contamination of the transparent cell chamber can result in wrong readings. Check at regular intervals and – if necessary – clean the transparent cell chamber using a moist cloth or cotton buds.
9. Large temperature differences between the instrument and the environment can lead to errors – e.g. due to the formation of condensation in the cell chamber or on the vial.
10. To avoid errors caused by stray light do not use the instrument in bright sunlight.
11. Always add the reagent tablets to the water sample straight from the foil without touching them with the fingers.
12. The reagents must be added in the correct sequence.

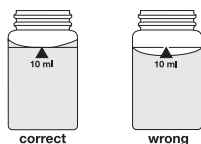
## Method notes

- Prior to measurement ensure that the sample is suitable for analysis (no major interferences) and does not require any preparation i.e. pH adjustment, filtration etc.
- Different Refill Packs available on request.
- Reagents are designed for use in chemical analysis only and should be kept well out of the reach of children.
- Ensure proper disposal of reagent solutions.
- Material Safety Data Sheets are available on request (Internet: [www.lovibond.com](http://www.lovibond.com))

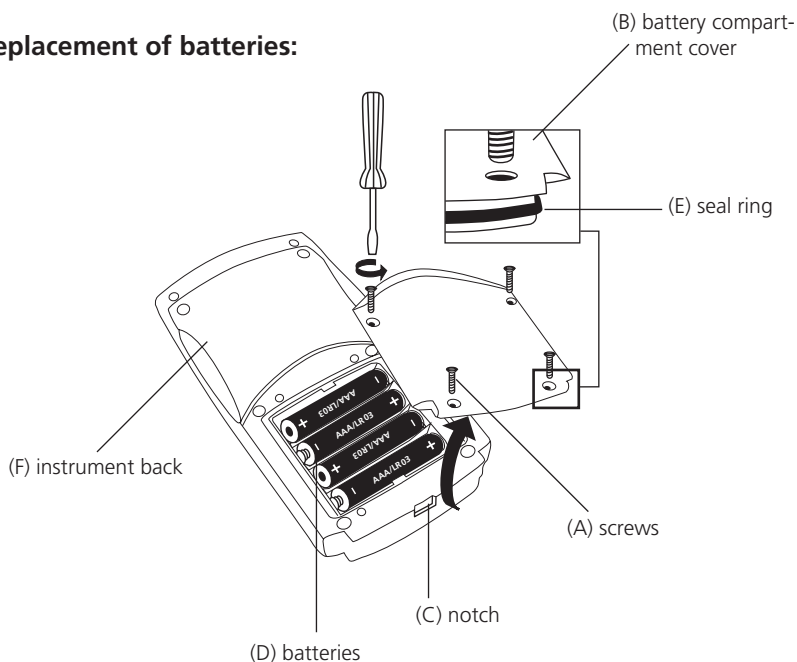
**Correct position of the vial (Ø 24 mm):**



**Correct filling of the vial:**



**Replacement of batteries:**



**CAUTION:**

**To ensure that the instrument is water proof:**

- seal ring (E) must be in position
- battery compartment cover (B) must be fixed with the four screws

If the batteries are removed for more than one minute the date and time menu starts automatically when the photometer is switched on the next time.

## Operation



METHOD

Switch the unit on using the [ON/OFF] key.

The display shows the following:



Select the required test using the [MODE] key.

### Scroll Memory (SM)

To avoid unnecessary scrolling for the required test method, the instrument memorizes the last method used before being switched off. When the instrument is switched on again, the scroll list comes up with the last used test method first.

METHOD

The display shows the following:

Fill a clean vial with the water sample up to the 10 ml mark, screw the cap on and place the vial in the sample chamber making sure that the  $\Sigma$  marks are aligned.



METHOD

Press the [ZERO/TEST] key (see OTZ).

The "Method" symbol flashes for approx. 8 seconds.

0.0.0

The display shows the following:

After zero calibration is completed, remove the vial from the sample chamber. The characteristic coloration appears after the addition of the reagents.

Replace the cap on the vial and place in the sample chamber making sure that the  $\Sigma$  marks are aligned.



METHOD

Press the [ZERO/TEST] key.

(For Countdown/reaction period see page 35)

The "Method" symbol flashes for approx. 3 seconds.

RESULT

The result appears in the display.

The result is saved automatically.

### Repeating the test:

Press the [ZERO/TEST] key again.

### OTZ (One Time Zero):

The zero setting is held in memory until the instrument is switched off. It is not necessary to perform a new zero each time, if the water samples under test are from the same body of water and the conditions of testing are the same.

The zero setting can be repeated each time if necessary.



### Repeating the zero:

Press the [ZERO/TEST] key for 2 seconds.

### Display backlight



Press the [!] key to turn the display backlight on or off. The backlight is switched off automatically during the measurement.

### Recall of stored data



If the instrument is switched on, press the [!] key for more than 4 seconds, then release the [!] key to access the recall menu.

### Countdown / reaction period

If a reaction period is included in a method a countdown function can be used:



Press the [!] key and hold.

Press the [ZERO/TEST] key.



Release the [!] key; the countdown starts.

After the countdown is finished the measurement starts automatically.

It is possible to interrupt the countdown by pressing the [ZERO/TEST] key. Measurement starts immediately.

#### **Caution:**

**An incomplete reaction period can lead to incorrect test results.**

CL 6

**Chlorine with Tablet**  
**0.01 – 6.0 mg/l**

0.0.0

**a) free Chlorine**

Fill a clean vial (24 mm Ø) with **10 ml of the water sample** and perform zero calibration (see "Operation").

Remove the vial from the sample chamber and **empty it, leaving a few drops remaining in the vial.**

Add **one DPD No. 1 tablet** straight from the foil to the water sample and crush the tablet using a clean stirring rod.

Add the water sample to the 10 ml mark.

Close the vial tightly with the cap and swirl gently several times until the tablet is dissolved.

Place the vial in the sample chamber making sure that the  $\Sigma$  marks are aligned.

Press the [ZERO/TEST] key.

The method symbol flashes for approx. 3 seconds.

The result is shown in the display in mg/l free Chlorine.



CL 6

RESULT

**b) total Chlorine**

Add **one DPD No. 3 tablet** straight from the foil to the same water sample and crush the tablet using a clean stirring rod.

Close the vial tightly with the cap and swirl gently several times until the tablet is dissolved.

Place the vial in the sample chamber making sure that the  $\Sigma$  marks are aligned.

**Wait for a reaction period of 2 minutes.**

(Countdown can be activated, see page 35)

The method symbol flashes for approx. 3 seconds.

The result is shown in the display in mg/l total Chlorine.



CL 6

RESULT

**c) combined Chlorine**

combined Chlorine = total Chlorine – free Chlorine

**Tolerances:**

- 0 – 1 mg/l:  $\pm 0.05$  mg/l
- > 1 – 2 mg/l:  $\pm 0.10$  mg/l
- > 2 – 3 mg/l:  $\pm 0.20$  mg/l
- > 3 – 4 mg/l:  $\pm 0.30$  mg/l
- > 4 – 6 mg/l:  $\pm 0.40$  mg/l

**Notes:**

1. Vial cleaning:  
As many household cleaners (e.g. dishwasher detergent) contain reducing substances, the subsequent determination of Chlorine may show lower results. To avoid any measurement errors, only use glassware free of Chlorine demand.  
Preparation: Put all applicable glassware into Sodium hypochlorite solution (0.1 g/l) for one hour, then rinse all glassware thoroughly with deionised water.
2. For individual testing of free and total Chlorine, the use of different sets of glassware is recommended (EN ISO 7393-2, 5.3)
3. Preparing the sample:  
When preparing the sample, the loss of Chlorine, e.g. by pipetting or shaking, must be avoided. The analysis must take place immediately after taking the sample.
4. The DPD colour development is carried out at a pH value of 6.2 to 6.5. The reagents therefore contain a buffer for the pH adjustment.  
Strong alkaline or acidic water samples must be adjusted between pH 6 and pH 7 before the reagent is added (use 0.5 mol/l Sulfuric acid resp. 1 mol/l Sodium hydroxide).
5. Exceeding the measuring range:  
Concentrations above 10 mg/l Chlorine can lead to results showing 0 mg/l. In this case, the water sample must be diluted with water free of Chlorine and the measurement repeated.
6. Turbidity (can lead to errors):  
The use of the reagent tablets in samples with high Calcium ion contents\* and/or high conductivity\* can lead to turbidity of the sample and therefore incorrect measurements. In this case, the reagent tablets DPD No. 1 High Calcium and DPD No. 3 High Calcium should be used as an alternative.  
*\* it is not possible to give exact values, because the development of turbidity depends on the nature of the sample.*
7. Oxidising agents such as Bromine, Ozone etc. interfere as they react in the same way as Chlorine.

Reagent	Form of reagent/Quantity	Order-No.
<b>Set</b> DPD No. 1 / No. 3	Tablet / per 100 inclusive stirring rod	517711BT
DPD No. 1	Tablet / 100	511050BT
DPD No. 3	Tablet / 100	511080BT
<b>Kombi-Pack</b> DPD No. 1 HIGH CALCIUM / DPD No. 3 HIGH CALCIUM	Tablet / per 100 inclusive stirring rod	517781BT
DPD No. 1 HIGH CALCIUM	Tablet / 100	515740BT
DPD No. 3 HIGH CALCIUM	Tablet / 100	515730BT

CL 6

**Chlorine with liquid reagent**  
**0.02 – 4.0 mg/l**

0.0.0

**a) free Chlorine**

Fill a clean vial (24 mm Ø) with **10 ml of the water sample** and perform zero calibration (see "Operation").

Remove the vial from the sample chamber and empty the vial.

Fill the vial with drops of the same size by holding the bottle vertically and squeeze slowly:

**6 drops of DPD 1 buffer solution****2 drops of DPD 1 reagent solution**

Add the water sample to the 10 ml mark.

Close the vial tightly with the cap and invert several times to mix the contents.

Place the vial in the sample chamber making sure that the  $\times$  marks are aligned.

Press the [ZERO/TEST] key.

The method symbol flashes for approx. 3 seconds.

The result is shown in the display in mg/l free Chlorine.

Zero  
Test

CL 6

RESULT

**b) total Chlorine**

Immediately after measurement add

**3 drops of DPD 3 solution** to the already coloured test solution.

Close the vial tightly with the cap and invert several times to mix the contents.

Place the vial in the sample chamber making sure that the  $\times$  marks are aligned.

**Wait for a reaction period of 2 minutes.**

(Countdown can be activated, see page 35)

The method symbol flashes for approx. 3 seconds.

The result is shown in the display in mg/l total Chlorine.

!

Zero  
Test

CL 6

RESULT

**c) combined Chlorine**

combined Chlorine = total Chlorine – free Chlorine

**Tolerances:**0 – 1 mg/l:  $\pm 0.05$  mg/l> 1 – 2 mg/l:  $\pm 0.10$  mg/l> 2 – 3 mg/l:  $\pm 0.20$  mg/l> 3 – 4 mg/l:  $\pm 0.30$  mg/l

**Notes:**

1. Vial cleaning:  
As many household cleaners (e.g. dishwasher detergent) contain reducing substances, the subsequent determination of Chlorine may show lower results. To avoid any measurement errors, only use glassware free of Chlorine demand.  
Preparation: Put all applicable glassware into Sodium hypochlorite solution (0.1 g/l) for one hour, then rinse all glassware thoroughly with deionised water.
2. For individual testing of free and total Chlorine, the use of different sets of glassware is recommended (EN ISO 7393-2, 5.3)
3. Preparing the sample:  
When preparing the sample, the loss of Chlorine, e.g. by pipetting or shaking, must be avoided. The analysis must take place immediately after taking the sample.
4. The DPD colour development is carried out at a pH value of 6.2 to 6.5. The reagents therefore contain a buffer for the pH adjustment.  
Strong alkaline or acidic water samples must be adjusted between pH 6 and pH 7 before the reagent is added (use 0.5 mol/l Sulfuric acid resp. 1 mol/l Sodium hydroxide).
5. Exceeding the measuring range:  
Concentrations above 4 mg/l Chlorine using liquid reagents can lead to results showing 0 mg/l. In this case, the water sample must be diluted with water free of Chlorine and the measurement repeated.
6. After using liquid reagents replace the bottle caps securely noting the colour coding.  
Store the reagent bottles in a cool, dry place ideally between 6°C and 10°C.
7. Oxidising agents such as Bromine, Ozone etc. interfere as they react in the same way as Chlorine.
8. In samples with high Calcium ion contents\* and/or high conductivity\* can lead to turbidity of the sample and therefore incorrect measurements. In this case, the reagent tablets DPD No. 1 High Calcium and DPD No. 3 High Calcium should be used as an alternative. (Order-No.: see reagents „Chlorine with Tablet“).  
*\* it is not possible to give exact values, because the development of turbidity depends on the nature of the sample.*

Reagent	Form of reagent/Quantity	Order-No.
<b>Set</b> DPD No. 1 buffer solution DPD No. 1 reagent solution DPD No. 3 solution	(approx. 300 tests) 3 x Liquid reagent / 15 ml 1 x Liquid reagent / 15 ml 2 x Liquid reagent / 15 ml	471056
DPD No. 1 buffer solution	Liquid reagent / 15 ml	471010
DPD No. 1 reagent solution	Liquid reagent / 15 ml	471020
DPD No. 3 solution	Liquid reagent / 15 ml	471030

CL 10

**Chlorine HR with DPD Tablet**  
**0.1 – 10 mg/l****a) free Chlorine**

0.0.0

Fill a clean vial (24 mm Ø) with **10 ml of the water sample** and perform zero calibration (see "Operation").

Remove the vial from the sample chamber and **empty it, leaving a few drops remaining in the vial.**

Add **one DPD No. 1 HR tablet** straight from the foil to the water sample and crush the tablet using a clean stirring rod.

Add the water sample to the 10 ml mark.

Close the vial tightly with the cap and swirl gently several times until the tablet is dissolved.

Place the vial in the sample chamber making sure that the  $\times$  marks are aligned.

Press the [ZERO/TEST] key.

The method symbol flashes for approx. 3 seconds.

The result is shown in the display in mg/l free Chlorine.



CL 10

RESULT

**b) total Chlorine**

Add **one DPD No. 3 HR tablet** straight from the foil to the same water sample and crush the tablet using a clean stirring rod.

Close the vial tightly with the cap and swirl gently several times until the tablet is dissolved.

Place the vial in the sample chamber making sure that the  $\times$  marks are aligned.

**Wait for a reaction period of 2 minutes.**

(Countdown can be activated, see page 35)

The method symbol flashes for approx. 3 seconds.

The result is shown in the display in mg/l total Chlorine.



CL 10

RESULT

**c) combined Chlorine**

combined Chlorine = total Chlorine – free Chlorine

**Tolerances:**

- 0 – 2 mg/l:  $\pm 0.1$  mg/l
- > 2 – 4 mg/l:  $\pm 0.3$  mg/l
- > 4 – 8 mg/l:  $\pm 0.4$  mg/l
- > 8 – 10 mg/l:  $\pm 0.5$  mg/l

**Notes:**

1. Vial cleaning:  
As many household cleaners (e.g. dishwasher detergent) contain reducing substances, the subsequent determination of Chlorine may show lower results. To avoid any measurement errors, only use glassware free of Chlorine demand.  
Preparation: Put all applicable glassware into Sodium hypochlorite solution (0.1 g/l) for one hour, then rinse all glassware thoroughly with deionised water.
2. Preparing the sample:  
When preparing the sample, the lost of Chlorine, e.g. by pipetting or shaking, must be avoided. The analysis must take place immediately after taking the sample.
3. The DPD colour development is carried out at a pH value of 6.2 to 6.5. The reagents therefore contain a buffer for the pH adjustment.  
Strong alkaline or acidic water samples must be adjusted between pH 6 and pH 7 before the reagent is added (use 0.5 mol/l Sulfuric acid resp. 1 mol/l Sodium hydroxide).
4. Turbidity (can lead to errors):  
Very high levels of calcium hardness (>1000 mg/l CaCO<sub>3</sub>) may lead to turbidity when performing the test. If this occurs add one EDTA tablet to 10 ml of the water sample prior to run the test.
5. Oxidising agents such as Bromine, Ozone etc. interfere as they react in the same way as Chlorine.

<b>Reagent</b>	<b>Form of reagent/Quantity</b>	<b>Order-No.</b>
DPD No. 1 HR	Tablet / 100	511500BT
DPD No. 3 HR	Tablet / 100	511590BT

Br

**Bromine with Tablet**  
**0.05 – 13 mg/l**

0.0.0

Fill a clean vial (24 mm Ø) with **10 ml of the water sample** and perform zero calibration (see "Operation").

Remove the vial from the sample chamber and **empty it, leaving a few drops remaining in the vial.**

Add **one DPD No. 1 tablet** straight from the foil to the water sample and crush the tablet using a clean stirring rod.

Add the water sample to the 10 ml mark.

Close the vial tightly with the cap and swirl gently several times until the tablet is dissolved.

Place the vial in the sample chamber making sure that the  $\Sigma$  marks are aligned.

Press the [ZERO/TEST] key.



≡ Br ≡

The method symbol flashes for approx. 3 seconds.

RESULT

The result is shown in the display in mg/l Bromine.

**Tolerances:**

- 0 – 2.3 mg/l:  $\pm 0.12$  mg/l
- > 2.3 – 4.5 mg/l:  $\pm 0.25$  mg/l
- > 4.5 – 6.8 mg/l:  $\pm 0.45$  mg/l
- > 6.8 – 9.0 mg/l:  $\pm 0.68$  mg/l
- > 9.0 – 13 mg/l:  $\pm 0.90$  mg/l

**Notes:**

1. Vial cleaning:  
As many household cleaners (e.g. dishwasher detergent) contain reducing substances, the subsequent determination of Bromine may show lower results. To avoid any measurement errors, only use glassware free of Chlorine demand.  
Preparation: Put all applicable glassware into Sodium hypochlorite solution (0.1 g/l) for one hour, then rinse all glassware thoroughly with deionised water.
2. Preparing the sample:  
When preparing the sample, the loss of Bromine, e.g. by pipetting or shaking, must be avoided. The analysis must take place immediately after taking the sample.
3. The DPD colour development is carried out at a pH value of 6.2 to 6.5. The reagents therefore contain a buffer for the pH adjustment.  
Strong alkaline or acidic water samples must be adjusted between pH 6 and pH 7 before the reagent is added (use 0.5 mol/l Sulfuric acid resp. 1 mol/l Sodium hydroxide).
4. Exceeding the measuring range:  
Concentrations above 22 mg/l Bromine can lead to results showing 0 mg/l. In this case, the water sample must be diluted with water free of Chlorine and the measurement repeated.
5. Oxidising agents such as Bromine, Ozone etc. interfere as they react in the same way as Bromine.

Reagent	Form of reagent/Quantity	Order-No.
DPD No. 1	Tablet / 100	511050BT

**PH**

**pH-value with Tablet  
6.5 – 8.4**

**0.0.0**

Fill a clean vial (24 mm Ø) with **10 ml of the water sample** and perform zero calibration (see "Operation").

Add **one PHENOL RED PHOTOMETER tablet** straight from the foil to the 10 ml water sample and crush the tablet using a clean stirring rod.

Close the vial tightly with the cap and swirl gently several times until the tablet is dissolved.

Place the vial in the sample chamber making sure that the  $\Sigma$  marks are aligned.

Press the [ZERO/TEST] key.

The method symbol flashes for approx. 3 seconds.

The result is shown in the display as pH-value.



**PH**

**RESULT**

**Tolerance:**  $\pm 0.1$  pH

**Notes:**

- For photometric determination of pH-values only use PHENOL RED tablets in black printed foil pack and marked with PHOTOMETER.
- Water samples with low values of Alkalinity-m (below 35 mg/l CaCO<sub>3</sub>) may give wrong pH readings.
- pH-values below 6.5 and above 8.4 can produce results inside the measuring range. A plausibility test (pH-meter) is recommended.
- Salt error

For salt concentrations below 2 g/l no significant error, due to the salt concentration of the reagent tablet, is expected. For higher salt concentrations the measurement values have to be adjusted as follows:

Salt content	30 g/l (seawater)	60 g/l	120 g/l	180 g/l
Correction	- 0,15 <sup>1)</sup>	- 0,21 <sup>2)</sup>	- 0,26 <sup>2)</sup>	- 0,29 <sup>2)</sup>

<sup>1)</sup> according to Kolthoff (1922)

<sup>2)</sup> according to Parson und Douglas (1926)

Reagent	Form of reagent/Quantity	Order-No.
PHENOL RED PHOTOMETER	Tablet / 100	511770BT

**PH**

**pH-value with liquid reagent  
6.5 – 8.4**

**0.0.0**

Fill a clean vial (24 mm Ø) with **10 ml of the water sample** and perform zero calibration (see "Operation").

Fill the vial with drops of the same size by holding the bottle vertically and squeeze slowly:

**6 drops of PHENOL RED solution.**

Close the vial tightly with the cap and invert several times to mix the contents.

Place the vial in the sample chamber making sure that the  $\boxtimes$  marks are aligned.

Press the [ZERO/TEST] key.



**PH**

The method symbol flashes for approx. 3 seconds.

**RESULT**

The result is shown in the display as pH-value.

**Tolerance:**  $\pm 0.2$  pH

**Notes:**

1. When testing chlorinated water the residual chlorine contents can influence the colour reaction of the liquid reagent. This can be avoided (without interfering with the pH measurement) by adding a small crystal of Sodiumthiosulfate ( $\text{Na}_2\text{S}_2\text{O}_3 \cdot 5 \text{H}_2\text{O}$ ) to the sample before adding the PHENOL RED solution. PHENOL RED tablets already contain Thiosulfate.
2. Due to differing drop sizes results can show a discrepancy in accuracy by comparison with tablets. This can be minimised by using a pipette (0.18 ml PHENOL RED solution is equivalent to 6 drops).
3. After use replace the bottle cap securely.
- 4. Store the reagent in a cool, dry place ideally between 6°C and 10°C.**
5. Salt error

For higher salt concentrations the measurement values have to be adjusted as follows:

Salt content	30 g/l (seawater)	60 g/l	120 g/l	180 g/l
Correction	- 0,15 <sup>1)</sup>	- 0,21 <sup>2)</sup>	- 0,26 <sup>2)</sup>	- 0,29 <sup>2)</sup>

<sup>1)</sup> according to Kolthoff (1922)

<sup>2)</sup> according to Parson und Douglas (1926)

Reagent	Form of reagent/Quantity	Order-No.
PHENOL RED solution	Liquid reagent / 15 ml	471040

CyA

**CyA-TEST (Cyanuric acid) with Tablet**  
**0 – 160 mg/l**

0.0.0

Fill a clean vial (24 mm Ø) with **5 ml of the water sample** and **5 ml deionised water** (Note 1) and perform zero calibration (see "Operation").

Add **one CyA-TEST tablet** straight from the foil to the prepared water sample and crush the tablet using a clean stirring rod.

Close the vial tightly with the cap and swirl gently several times until the tablet is dissolved (Notes 2, 3).

Place the vial in the sample chamber making sure that the  $\Sigma$  marks are aligned.

Press the [ZERO/TEST] key.

The method symbol flashes for approx. 3 seconds.

The result is shown in the display in mg/l Cyanuric acid.



CyA

RESULT

**Tolerances:**

0 – 50 mg/l:  $\pm 10$  mg/l

> 50 – 100 mg/l:  $\pm 15$  mg/l

> 100 – 160 mg/l:  $\pm 20$  mg/l

**Notes:**

1. Use deionised water or tap water free of Cyanuric acid.
2. If Cyanuric acid is present a cloudy solution will occur.  
 Small single particles are not necessarily caused by Cyanuric acid.
3. Dissolve the tablet completely (therefore swirl the vial approx. 1 minute).  
 Un-dissolved particles of the tablet can cause results that are too high.

Reagent	Form of reagent/Quantity	Order-No.
CyA-TEST	Tablet / 100	511370BT

tA

**Alkalinity-m with Tablet  
5 – 200 mg/l**

0.0.0

Fill a clean vial (24 mm Ø) with **10 ml of the water sample** and perform zero calibration (see "Operation").

Add **one ALKA-M-PHOTOMETER tablet** straight from the foil to the 10 ml water sample and crush the tablet using a clean stirring rod.

Close the vial tightly with the cap and swirl gently several times until the tablet is dissolved.

Place the vial in the sample chamber making sure that the  $\times$  marks are aligned.

Press the [ZERO/TEST] key.

The method symbol flashes for approx. 3 seconds.

The result is shown in the display in mg/l CaCO<sub>3</sub>.



tA

RESULT

**Tolerance:** ± 5% (full scale)

**Notes:**

1. The terms total Alkalinity, Alkalinity-m, m-Value and Alkalinity to pH 4.3 are identical.
2. For accurate results exactly 10 ml of water sample must be taken for the test.
3. Conversion table:

	Acid demand to pH 4.3 DIN 38 409 (K54.3)	German °dH*	English °eH*	French °fH*
1 mg/l CaCO <sub>3</sub>	0.02	0.056	0.07	0.1

\*Carbonate hardness (reference = Hydrogencarbonate-anions)

Example:

$$10 \text{ mg/l CaCO}_3 = 10 \text{ mg/l} \cdot 0.056 = 0.56 \text{ °dH}$$

$$10 \text{ mg/l CaCO}_3 = 10 \text{ mg/l} \cdot 0.02 = 0.2 \text{ mmol/l}$$

Reagent	Form of reagent/Quantity	Order-No.
ALKA-M-PHOTOMETER	Tablet / 100	513210BT

CAH

**Hardness, Calcium with Tablet**  
**0 – 500 mg/l**

0.0.0

Fill a clean vial (24 mm Ø) with **10 ml of the water sample** and perform zero calibration (see "Operation").

Add **one CALCIO H No. 1 tablet** straight from the foil to the water sample and crush the tablet using a clean stirring rod. Dissolve the tablet completely.

Add **one CALCIO H No. 2 tablet** straight from the foil to the same water sample and crush the tablet using a clean stirring rod.

Close the vial tightly with the cap and swirl gently several times until the tablet is dissolved completely.

Place the vial in the sample chamber making sure that the  $\times$  marks are aligned.

**Wait for a reaction period of 2 minutes.**

(Countdown can be activated, see page 35)

CAH

The method symbol flashes for approx. 3 seconds.

RESULT

The result is shown in the display in mg/l CaCO<sub>3</sub>.

**Tolerances:**

0 – 250 mg/l:  $\pm$  5% (full scale)

251 – 500 mg/l:  $\pm$  10% (full scale)

**Notes:**

1. Strong alkaline or acidic water samples must be adjusted to a pH-value between pH 4 and 10 before the tablets are added (use 1 mol/l Hydrochloride acid resp. 1 mol/l Sodium hydroxide).
2. Due to the accuracy of this method the result is rounded (in steps of 10 mg/l CaCO<sub>3</sub>).
3. The tolerance of the method is increasing with higher concentrations. When diluting samples, this should be taken in account, always measuring in the first third of the range.
4. Interferences:
  - Magnesium hardness up to 200 mg/l CaCO<sub>3</sub> does not interfere.
  - Iron concentration above 10 mg/l may cause low results.
  - Zinc concentration above 5 mg/l may cause high results.
5. For highest accuracy a batch related user calibration can be performed.

<b>Reagent</b>	<b>Form of reagent/Quantity</b>	<b>Order-No.</b>
<b>Set</b> CALCIO H No. 1 / No. 2	Tablet / per 100 inclusive stirring rod	517761BT

Mode

On  
Off

!



## Menu selections

Press the [MODE] key and **hold**.

Switch the unit on using the [ON/OFF] key.

Allow the 3 decimal points to be displayed before releasing the [MODE] key.

The [!] key allows for selection of the following menu points:

- ▲ diS recall stored data
- ▲ Prt transmitting stored data
- ▲ ▾ setting the date and time
- ▾ user calibration

The selected menu is indicated by an arrow in the display.



Mode

## ▲ diS – Recall of stored data

After confirming the selection with the [MODE] key the photometer shows the last 48 data sets in the following format (automatically proceeds every 3 seconds until result is displayed):

Number n xx (xx: 16..1)  
Year YYYY (e.g. 2014)  
Date mm.dd (monthmonth:dayday)  
Time hh:mm (hourhour:minute) minute)  
Test Method  
Result x,xx

The [ZERO/TEST] key repeats the current data set.

The [MODE] key scrolls through all stored data sets.

Quit the menu by pressing [!] key.

Zero  
Test

Mode

!



## ▲ Prt – Transmitting stored data - Bluetooth®

The MD 110 has a Bluetooth® 4.0 interface which enables the wireless transmission of data. Now it is possible to transmit stored results. Bluetooth® 4.0 is also known as Bluetooth® Smart or Bluetooth® LE (Low Energy). Data is transmitted from the photometer as a .csv file. Details on how information is transmitted from the photometer can be found on [www.lovibond.com](http://www.lovibond.com). To receive the data, there are several options on offer from the Tintometer® Group.

The App, AquaLX®, is available for mobile devices such as Smartphones and Tablets and enables the user to manage and graphically chart the received data. Both the data and charts can then be shared via email. AquaLX® can be downloaded free of charge from the iTunes Store® for iOS® and from Google Play™ Store for Android™.



A software tool is available for PCs to receive data stored on the photometer. The data can be exported to an Excel® spreadsheet which enables users to process the information according to their usual practice. If Excel® is not available, the data can be stored as a .txt file for processing at a later date. A Bluetooth® dongle is required to receive the data. This is part of the delivery content of the software.

Description	Part Number
Software, incl. Bluetooth® Dongle	2444480



Peripherals must be ready. Press the [MODE] key to start the transmitting.



The display shows the status of the Bluetooth® connection:

The display shows: „ncon“ (not connecting).

If necessary an update of the list of recognized devices in the software on the peripheral devices may be required. See therefore the instruction of the AqualX or the data transmission software for the bluetooth dongle.



The display shows: „con“ (connecting).



Press the [MODE] key to start the transmission, the instrument shows “PrtG” (Printing) during the data transmission and connection.



All data sets will be transmitted one after the other. After finishing the instrument switches to test mode and the Bluetooth® connection is interrupted.



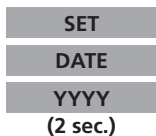
The transfer can be cancelled at any time by pressing the [On/Off] key. The instrument switches off.



### **2 3 Setting date and time (24-hour-format)**



After confirming the selection with the [MODE] key the value to be edited will be shown for 2 sec.



The setting starts with the year (YYYY) followed by the actual value to be edited. The same applies for month (mm), day (dd), hour (hh) and minutes (mm). Set the minutes first in steps of 10, press the [!] key to continue setting the minutes in steps of 1.



Increase the value by pressing the [MODE] key.



Decrease the value by pressing [ZERO/TEST] key.



Proceed to the next value to be edited by pressing [!] key.

After setting the minutes and pressing the [!] key the display will show "IS SET" and the instrument returns to the measurement mode.



## 4 User calibration

### Note:

user calibration (Display in calibration mode)

factory calibration (Display in calibration mode)

After confirming the selection with the [MODE] key the instrument will show CAL"Method".

Scroll through methods using the [MODE] key.

Fill a clean vial with the standard up to the 10 ml mark, screw the cap on and place the vial in the sample chamber making sure that the X marks are aligned.

Press the [ZERO/TEST] key.

The method symbol flashes for approx. 8 seconds.

The display shows the following in alternating mode:

Perform calibration with a standard of known concentration (see "Operation").

Press the [ZERO/TEST] key.

The method symbol flashes for approx. 3 seconds.

The result is shown in the display, alternating with CAL.

If the reading corresponds with the value of the calibration standard (within the specified tolerance), exit calibration mode by pressing the [ON/OFF] key.

Changing the displayed value:

Pressing the [MODE] key once increases the displayed value by 1 digit.

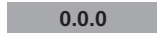
Pressing the [ZERO/TEST] key once decreases the displayed value by 1 digit.

Press the corresponding key until the reading equals the value of the calibration standard.

By pressing the [ON/OFF] key, the new correction factor is calculated and stored in the user calibration software.

Confirmation of calibration (3 seconds).

**Note:** Separate calibration of the measuring range for Bromine is not possible. The unit uses the calibration for the Chlorine measuring range (CL 6).



## Factory calibration reset

Resetting the user calibration to the original factory calibration will reset all methods and ranges.

A user calibrated method is indicated by an arrow while the test result is displayed.

To reset the calibration press both the [MODE] and [ZERO/TEST] key and **hold**.

Switch the unit on using the [ON/OFF] key.

Release the [MODE] and [ZERO/TEST] keys after approx. 1 second.

The following messages will appear in turn on the display:

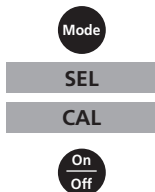


The factory setting is active.  
(SEL stands for Select)

**or:**



Calibration has been set by the user.  
(If the user calibration is to be retained, switch the unit off using the [ON/OFF] key).



Calibration is reset to the factory setting by pressing the [MODE] key.  
The following messages will appear in turn on the display:

Switch the unit off using the [ON/OFF] key.

**Technical Data**

Instrument	double wavelength, automatic wavelength selection, direct reading colorimeter
Light source:	LEDs, interference filters (IF) and photosensor in transparent cell chamber. Wavelength specifications of the IF: 530 nm $\Delta \lambda = 5 \text{ nm}$ 560 nm $\Delta \lambda = 5 \text{ nm}$
Wavelength accuracy	$\pm 1 \text{ nm}$
Photometric accuracy*	3% FS (T = 20° C – 25° C)
Photometric resolution	0.01 A
Power supply	4 batteries (AAA/LR 03)
Operating time	17hr operating time or 5000 measurements in constant use when display backlight and Bluetooth® data transfer are off.
Auto-OFF	automatic switch off 10 minutes after last keypress
Display	backlit LCD (on keypress)
Storage	internal ring memory for 125 data sets
Serial Interface	Bluetooth® 4.0 for the transfer of stored measurement data
Bluetooth® Modul:	Specifications: Modul: BLE113-A Bluetooth® 4.0 LE FCC ID: QOQBT113 IC: 5123A-BGTBLE113
Time	real time clock und date
Calibration	user and factory calibration resetting to factory calibration possible
Dimensions	155 x 75 x 35 mm (LxWxH)
Weight	approx. 260 g (incl. batteries)
Ambient conditions	temperature: 5–40 °C rel. humidity: 30–90 % (non-condensing)
Waterproof	floating; as defined in IP 68 (1 hour at 0.1 meter)
CE	Certificate for Declaration of CE-Conformity at <a href="http://www.lovibond.com">www.lovibond.com</a>

*\*measured with standard solutions*

To ensure maximum accuracy of test results, always use the reagent systems supplied by the instrument manufacturer.